

# SPECIFICATION SHEET

## Hand Protection



**KOSTO**  
BUILT STRONG • BÂTI SOLIDE

### Full-Grain Leather Gloves With Cotton Back

**MGG220**

#### Description

These Kosto full-grain leather work gloves feature a breathable back cotton and a 3-piece palm. The inside of the safety glove is lined with lightweight flannel in the palm and fingers area. The fingertips of this safety glove are reinforced. The rigid safety cuff makes sure to protect the wrist and the elastic adds extra comfort.

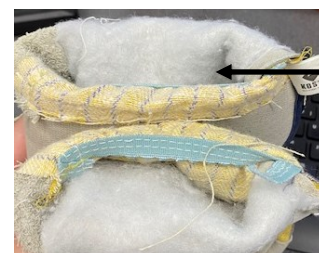
The leather knuckle straps and highly resistant stitches make them a robust choice to protect your hands, no matter the environment you're working in.

#### Material

Full-Grain Leather  
Cotton  
Lightweight flannel lining

#### Size

Universal



Fleece lined palm for better resistance

PROTECTION • RELIABILITY • QUALITY

[WWW.SPI.COM](http://WWW.SPI.COM)

# SPECIFICATION SHEET

## Hand Protection



**KOSTO**  
BUILT STRONG • BÂTI SOLIDE

### Related Products

Leather with Cotton  
**MGG312**  
Boa lining



Leather with Cotton  
**MGG001**  
Long palm



Leather with Cotton  
**MGG134**  
With lined palm



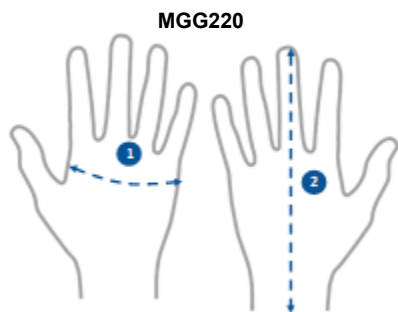
### Care and washing instructions

A good way to keep leather gloves longer is to clean them regularly.

- Clean with a cloth and a mild soap that contains natural fats (e.g. Marseille soap)
- Clean with a soft, damp cloth, removing any dirt
- Air dry only
- Do not clean with hard soap as it removes the natural oils from the leather and makes it stiffer.



### Sizing Chart



| Size Kosto * |                |         | Universelle |
|--------------|----------------|---------|-------------|
| 1            | Width (hand)   | cm      | 13          |
|              |                | po / in | 5.1         |
| 2            | Length (glove) | cm      | 19          |
|              |                | po / in | 7.5         |

\* The measurements are those of the product.

\* A fitting is always recommended.